

14 Charles Lane
New York, N.Y. 10014

March 4, 1971

TO ALL COMRADES

Dear Comrades,

Enclosed is a copy of the Women and the War resolution which was adopted at the Student Mobilization Committee Antiwar Conference, February 19-21, in Washington D.C. The central thrust of the resolution is the setting up of a United Women's Contingent for April 24. This contingent has been projected as an ad-hoc formation, organizationally independent of the Student Mobilization Committee and National Peace Action Coalition, which is being formed solely around bringing women into a contingent for April 24.

This concept of an independent women's contingent, which was discussed and adopted at the SMC conference, is different from the way women have been mobilized for antiwar demonstrations in the past. Prior to this, women have mobilized through task forces of the SMC or through broader antiwar coalitions. This new independent ad-hoc formation has the possibility of involving feminists and women's organizations that would not necessarily want to affiliate with the SMC or NPAC. At the same time, the SMC and NPAC can help initiate and build the contingents.

Already there are many significant signs of the enthusiasm and interest that can be built for a women's contingent. Workshops on women and the war are being organized at many of the feminist conferences being held, and are attracting large numbers of women. The interest on the part of independents in the Canadian conferences being organized to meet the Vietnamese -- despite the sectarian and exclusive nature of these conferences -- is another example of the potential for April 24. The United Women's Contingent will be able to reach out to women's liberation activists, trade union women, women on the college and high school campuses, Black, Chicana and Puerto Rican women, professional and church women, and involve them in the planning and building of the April 24 action.

It is important that we begin to help build the United Women's Contingent immediately. The concrete work and organizing needed to build the contingent has to take place in the local areas. One person from each local should be assigned to head up this work. Comrades should begin now by discussing the contingent with other women, calling meetings of interested women, contacting individual women and women's groups about April 24 and urging them to endorse the demonstration and build the women's contingent, sending articles on the contingent to women's publications, raising the idea at teach-ins and conferences planned for International Women's Day, and

helping to initiate action on women and the war in the week preceeding April 24.

The Student Mobilization Committee is contacting women in influential women's organizations, women's liberation and antiwar groups and individual women that might be interested in signing and putting out the call for the United Women's Contingent, requesting women to actively take part in and help build this contingent for April 24. A list of any prominent individual women or organizations in your area that you think should be contacted regarding this call should be sent to Marcia Sweetenham, c/o United Women's Contingent, 1029 Vermont Avenue N.W., 8th Floor, Washington D.C., 20005. The list should include name, address, phone number, organization and affiliation or occupation.

This information is needed immediately so that Marcia can begin contacting women about their endorsement of the contingent.

Please send into the SWP national office the name of the comrade who will be heading up this area of work, and also send reports into the Young Socialist Organizer and The Militant once the work on the building for the contingent is begun.

Comradely,

Betsey Stone

Betsey Stone
SWP National Office

SMC STATEMENT ON WOMEN'S CONTINGENT

78 percent of the women in this country want an immediate end to the war in Southeast Asia, according to a recent Gallup Poll. We are outraged at the latest escalation by the Nixon administration, threatening an invasion of North Vietnam and Laos. We are 53 percent of the population -- a majority -- but we are not Nixon's silent majority. We are a vocal majority -- one that is asserting our power as women and demanding our full rights as human beings. We as women must unite our forces to bring about a total and complete withdrawal of troops from Southeast Asia and their return home.

On April 24, massive demonstrations for immediate withdrawal will take place in Washington and San Francisco expressing the growing disgust of the American people with this war. These demonstrations will be legal, peaceful protests aimed at uniting in action all Americans who oppose the war. We are urging women to join together and march in united women's contingents on April 24.

It is imperative that women help to stop this war by demanding that the billions of dollars worth of resources and human lives presently being used to massacre people and ravage Southeast Asia be used instead to provide childcare centers, job, education and medical facilities so that we can control our own bodies and lives.

We urge all women -- students, housewives, working women, Third World women, women's liberation activists, church women -- to join the women's contingent. We must unite to show where we stand and demonstrate the power we as women have to force an end to the war now.

By Daniel P. Jada
Globe Staff

Leaders of seven national labor unions formed an alliance with students and faculty yesterday and issued a joint statement severely criticizing the invasion of Laos. The alliance is the first of its kind in this country.

"The invasion of yet another nation in Indochina has revealed the real meaning of Vietnamization. The destruction which US bombs have brought to South Vietnam and Cambodia is now visited upon Laos," the statement began.

The statement was signed in Cambridge after a full day of meetings yesterday in the Harvard Faculty Club by the following persons:

LABOR UNIONS: Leonard Woodcock, United Auto Workers president; Nat Weinberg, United Auto Workers director of special projects; Harold Gibbons, Teamsters international vice president; Howard D. Samuel, assistant to the president of the Amalgamated Clothing Workers (AFL-CIO); James Matles, United Electrical Workers, secretary-treasurer; John Hein, assistant to the president of the American Federation of State, County and Municipal Workers (AFL-CIO); Cleveland Robinson, president and Ralph Worrell, assistant to the president of the Distributive Workers of America; and Abe Feinglass, assistant to the president, Amalgamated Meat Cutters and Butcher Workers.

FACULTY: George Wald, Harvard; Noam Chomsky, MIT; Franz Schurmann, University of California at Berkeley; Seymour Melman, Columbia; Richard Barnet, Institute for Policy Studies, Washington, D.C.; Sidney Peck, Western Reserve,

STUDENTS: David Iwashin, National Student Assn. president, Washington, D.C.; Frank Greer, University of Maryland (NSA); John Rodriguez, University of Oregon; Charles Schumer, Harvard; Steve Tiwald, University of Nebraska; and William Shamblin, University of W. Virginia.

The joint statement called the Nixon Administration's explanation for the expansion of the war to end the war a "devious claim." "We have heard that before," the statement said.

"You do not save American lives by sending Americans into battle. You do not stop a war by spreading it . . . The expansion of the war closer to the Chinese border holds grave risks of even more dangerous military involvements," the statement said.

"American troops are demoralized. The only way to end the war is by setting a date for complete withdrawal of all American forces from Indochina and by meeting that commitment," the statement ended.

Wald a Nobel prize-winning biologist, said he has worked since last August to get progressives in universities and labor unions together.

"Yesterday was the first time in this nation's history that these three constituencies have formed an alliance. It will be called the Labor-University Alliance.

"It will be oriented not towards a candidate or party, but towards a whole series of issues — political and social," Wald said.

Wald said the alliance expects other national unions to join the effort. Jack Sheehan, national legislative representative of the Steel Workers Union, and officials of the Oil, Chemical and Atomic Workers Union have attended previous meetings but could not attend yesterday's, Wald said.

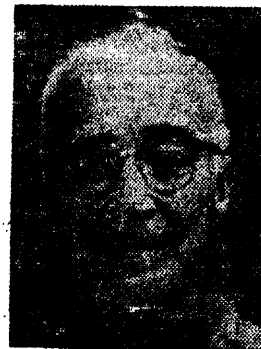
"The important discovery we have made is that academicians have a central interest and take the same sides as these progressive labor unions," Wald said.

"The main point is that there has been no real communication between these groups, that each represents a focus of power and influence.

"Academic people have the illusion that labor unions are interested only in such matters as wages, hours and working conditions, whereas in fact, the better, and almost all, labor unions cover the whole spectrum of social and political interests.

"The hope is that the academic community, which has knowledge and expertise, but lacks a broad base in the outside community and any real political muscle will forge a working arrangement with labor unions who could use our research, expertise, and articulateness," he said.

Wald said the new organization, which will initially be union funded until a sufficient membership is established, will do everything politically possible to further common goals.



DR. WALD

organizer. He said the Labor-University Alliance will lobby in Congress, design legislation, and back candidates supporting their goals of:

- Cutting the military budget and getting out of Southeast Asia.

- Shifting the nation's economy from one geared to war to one geared to human needs, such as environment, health care, job security.

- Repairing the country.

The first order of business, Wald said, is to establish a search committee and find a full-time executive director.



WOODCOCK

UAW president. "All the academic people at the meeting were absolutely dumbfounded. They had no idea that labor leaders who represent so much power, were ready to go so far so fast," Wald said.

"It gives a new flavor to the myth promulgated in America that blue collar workers are a monolith which only supports the government," he said.

Wald said the alliance would be organized nationally, with area locals in 15 key cities across the country. He said it would probably need \$50,000 to operate the first year.

Union Leaders Join Antiwar Alliance

Leaders of seven national labor unions yesterday formed an alliance with educators and students to lobby against the war and for shifting of the nation's priorities. The new Labor-University Alliance, which includes UAW President Leonard Woodcock and Nobel laureate George Wald of Harvard, also issued a statement condemning the invasion of Laos. Story, Page 27.

14 Charles Lane
New York, N.Y. 10014
April 2, 1971

TO ALL ORGANIZERS AND NC MEMBERS

Dear Comrades,

Attached is the schedule for the upcoming internal organizational tour on finances by Judy White. The purpose of this tour will be to discuss the finances of the branches in general and the finances of each of the branch departments.

To make the tour most fruitful, initial meetings should be scheduled in each branch with the branch organizer and financial director. These should be followed by meetings set up with the comrades in charge of sales, bookstores, forums, regional work, election campaign work and other branch departments as it seems useful. Three days are being allotted for the tour in each area so that adequate time for such discussions will be available.

Please let us know if there are problems with the proposed dates or quota for your area.

All tour quotas should be sent directly to the national office.

Comradely,

Barry Sheppard (H)

Barry Sheppard
National Office

REVISED TOUR SCHEDULE FOR JUDY WHITE

<u>Branch</u>	<u>Dates</u>	<u>Proposed Quota</u>
Chicago	April 9-11	\$ 40
Detroit	April 12-14	40
Cleveland	April 15-17	35
New York (break)	April 18-27	
Houston	April 28-30	35
Austin	May 1-3	25
Denver	May 4-6	25
Minneapolis	May 7-9	45
New York (break)	May 10-17	
Seattle	May 18-20	35
Portland	May 21-23	25
San Francisco	May 24-26	40
Oakland-Berkeley	May 27-29	40
Los Angeles	May 30-June 1	70
San Diego	June 2-4	25
New York (break)	June 5-13	
Boston	June 14-16	70
NY Downtown	June 17-19	40
NY Uptown	June 20-22	40
Brooklyn	June 24-25	40

14 Charles Lane
New York, N.Y. 10014
April 2, 1971

TO ALL BRANCH ORGANIZERS

Dear Comrades,

Militant Improvement Fund

We have decided to launch a special six-week \$5,000 fund drive in order to be able to acquire two machines that will facilitate the mailing and improve the format of The Militant. A copy of the enclosed letter, which makes clear the nature and purpose of the drive, will be sent to all long-time subscribers of the paper and past contributors to similar special projects. Also enclosed is a list of past contributors in your area whose names we have on file. They are among those who will be receiving the enclosed letter.

This project should not be seen as an effort of the branch as a whole. You, or some other comrade in the branch who is acquainted with the kind of comrades and friends most apt to respond favorably to this appeal, should take responsibility for personally following up on the mailing and discussing the project with them.

Unlike last year's special fund-raising project for the paper, this one will be made public in the pages of The Militant. The drive will be presented as a part of the continued expansion of The Militant and the integral part it is playing in the current radicalization. While areas will not be assigned quotas, it is important that a good showing be visible in the regular reports that will be appearing in the paper.

The project will be announced in the issue of The Militant dated April 16.

If you have any questions about this drive, please feel free to call the national office to discuss them.

Comradely,

Judy White

Judy White
National Financial Director

COPY

COPY

COPY

14 Charles Lane
New York, N.Y. 10014
April 12, 1971

Dear Friend,

The Militant has been going through a rapid process of expansion during the past year. This is most clearly visible in the changes in size and appearance of the paper. You are familiar with some or all of these changes -- depending on how long you have been a subscriber.

One year ago, The Militant had 16 pages. Last summer we began publishing 20-page issues whenever this was financially feasible. This continued throughout the fall. Then, with the Christmas 1970 issue came the most dramatic change in years: Not only did The Militant move to 24 pages for the first time in its 42-year history, but it underwent a striking improvement in format -- more modern, more imaginative, more pleasing from a graphic point of view. This expansion also enabled us to add several new departments to the paper, including a regular editorial page, a culture page, and frequent special features.

We believe The Militant is today not only the most attractive paper on the American left, but the one with the best information and analysis and the best builder of the movements for social change.

Besides the changes in size and format during the past year, The Militant was able to respond with special issues and particularly high press runs (up to 75,000 at one time) during the postal strike and the nationwide student strike last May against the invasion of Cambodia. Throughout this period, we have been able to reach ever greater numbers of people. Our weekly circulation currently stands at around 20,000 -- a 37% increase over the past year.

We are confident that you are as pleased as we are with this record of expansion and dynamism.

As movements like the women's liberation movement, the Chicano movement, the antiwar movement, the gay liberation movement, and others, continue to grow, we find that in order to do the most effective job as a revolutionary newspaper, we need to acquire the means to more efficiently respond to their needs and those of our readers. In addition, The Militant plans to play an active role in the upcoming 1972 presidential election campaign as a campaigner for revolutionary socialism.

What we need, if we are to be able to adequately meet the needs for expansion and improvement that are already pressing upon us, is to purchase the following two machines:

(1) A Cheshire mailing machine. This machine will entirely automate the current process of stamping each subscriber's name and address

on The Militant by hand before it can be mailed. As our circulation expands, the present method has become obsolescent and cumbersome. It will have to be replaced.

(2) A headliner machine. This machine will permit us to utilize virtually any style of headline type available. It will render unnecessary the long hours that now must sometimes be spent in pressing down headline type by hand. It will further enhance the professional appearance of The Militant.

Together these machines will cost \$5,000.

The purpose of this appeal, which is also being made in the pages of The Militant, is to urge you to do as much as you possibly can to help us raise this sum. We hope to accomplish this within the next six-week period. Your contribution will be an important investment in the most widely read voice for socialism in America.

Please respond generously -- today.

Sincerely,

s/ Mary-Alice Waters
Editor

s/ Flax Hermes
Business Manager

14 Charles Lane
New York, N.Y. 10014
April 2, 1971

TO ALL BRANCH ORGANIZERS

Dear Comrades,

An important point raised at the recent plenum of the SWP National Committee was the potential of obtaining honoraria for SWP and YSA national and local speakers. We're sending this letter to give comrades an idea of what has been done so far, and as an indicator of what can be done in the coming months.

There are several general points that can be made. First, as the facts on the attached chart bear out, it is possible to obtain honoraria for many more than one speaker of the Trotskyist movement during one semester or school year. In fact, in some places which have had the largest number of Trotskyist speakers more money has been raised for each speaker.

Second, while acquisition of honoraria is often linked to a strong campus base or a well-organized regional network for a given area, it is also true that nationally known representatives of our movement can be used to break onto a campus, and can often serve as an initial step in expanding our campus and regional work.

Third, as is the case with all our political work, audacity is key. When approaching student governments, political and/or social organizations or college and university administrations for honoraria, we should present our movement as what it is rapidly becoming -- the central most attractive tendency in today's growing radical movement. Far from being detrimental to getting honoraria and free publicity, the ideas of the SWP and YSA will be attractive to many student bodies and administrations and they will be willing to pay to hear them.

* * * * *

The attached chart covers only national speaking tours by leading SWP members. In addition to full national tours, several areas have used national SWP speakers for local or regional "mini-tours".

Paul Boutelle recently made three such tours. The first was to the West Coast, covering Los Angeles, the San Francisco Bay Area, and Seattle, for honoraria totalling over \$ 300. The second was to the Texas-Oklahoma region, covering Norman, Houston, Austin, and El Paso, for honoraria totalling \$ 750. The third was a one-stop trip to Durham, N.C., where Paul spoke at two campuses for honoraria totalling \$ 400.

Clifton DeBerry also recently made such a tour to the Detroit area, speaking at three campuses for honoraria totalling \$ 150. George Novack is scheduled to speak in Knoxville, Tenn., in April for a \$ 600 honorarium, and a Midwest "mini-tour" is being organized for Peter Camejo for the first week in May.

* * * * *

In addition to national speakers and tours, it is possible for branches and locals to organize local or regional tours or speakers bureaus with great financial as well as political success. Los Angeles is leading the way on this. With their "Activists and Issues Forum" the comrades have raised over \$ 300 in the first two weeks of the series, and hope to raise over \$ 1000 more this semester! They also use the Activists and Issues Forum as a vehicle for establishing contacts and gaining recruits to our movement.

* * * * *

The information on the attached chart is estimated, and the figures given are gross figures. Of the three tours covered, two have been completed (Evelyn Reed and Peter Buch) and one is in progress (Linda Jenness).

As the YSA and SWP move more into the center of the radical movement, we will find that new and expanded financial opportunities will arise to match the political. The above reports and attached chart indicate that this is beginning to take place. However, they also indicate that we have to put a maximum amount of effort into this aspect of our work to maximize the possible gains.

Comradely,

Rich Lesnik

Rich Lesnik
National Office

	Buch Tour		Reed Tour		Jeness Tour	
	<u>No.</u>	<u>Sch.</u>	<u>Hon.</u>	<u>No.</u>	<u>Sch.</u>	<u>Hon.</u>
Atlanta- Fla.	1		\$ 75	7		\$ 525
Austin	(see Houston)			1		--
Antoich	1		75	--		--
Boston	2		125	8		725
Chicago	2		300	1		--
Cincinnati	--		--	--		--
Cleveland	4		410			
DC	?		?	3		350
Denver	2		60			
Detroit	4		325	1		150
El Paso	1		25			
Houston	2		375			
LaCrosse	1		250			
L.A.	?		?	5		250
Madison	1		175			
New York	3		375	6		200
Oakland- Berkeley	(see S.F.)			(see S.F.)		
Oshkosh						1 110
Phila.				5		150
Portland	3		200	2		75
San Diego	1		200	1		75
S.F.	2		100	4		200
Seattle	1		100	2		150
Twin Cities	1		150			
TOTALS			\$ 3320			\$ 2850
						\$ 965

SUPPLEMENT TO MARCH 1971 FINANCIAL NOTES

<u>Branch</u>	<u>Status with Pathfinder</u>
Atlanta	current*
Austin	current
Boston	current*
Chicago	fell behind
Cleveland	fell behind
Denver	fell behind
Detroit	current*
Houston	current
Los Angeles	current
New York	current*
Oakland-Berkeley	fell behind
Philadelphia	current
Portland	current
San Diego	fell behind
San Francisco	fell behind
Seattle	current
Twin Cities	fell behind
Washington, D.C.	current*

*also paid some arrears